

PSE.NET Technique Tutorial



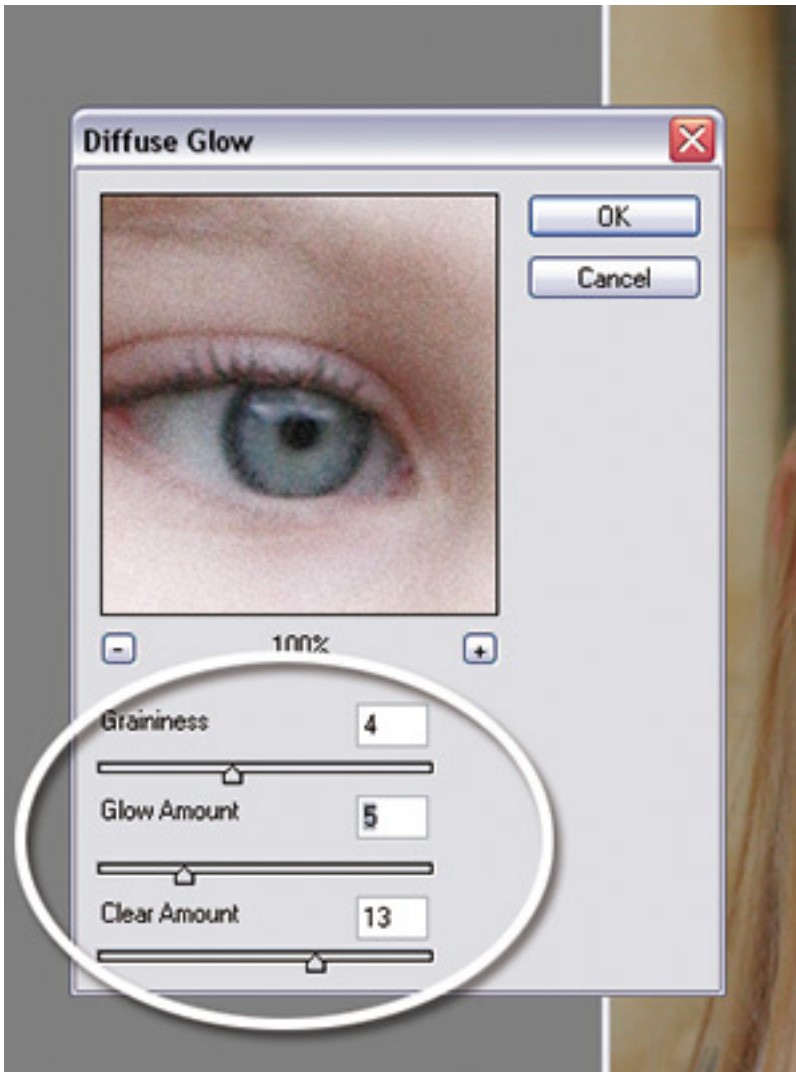


Step by Step:

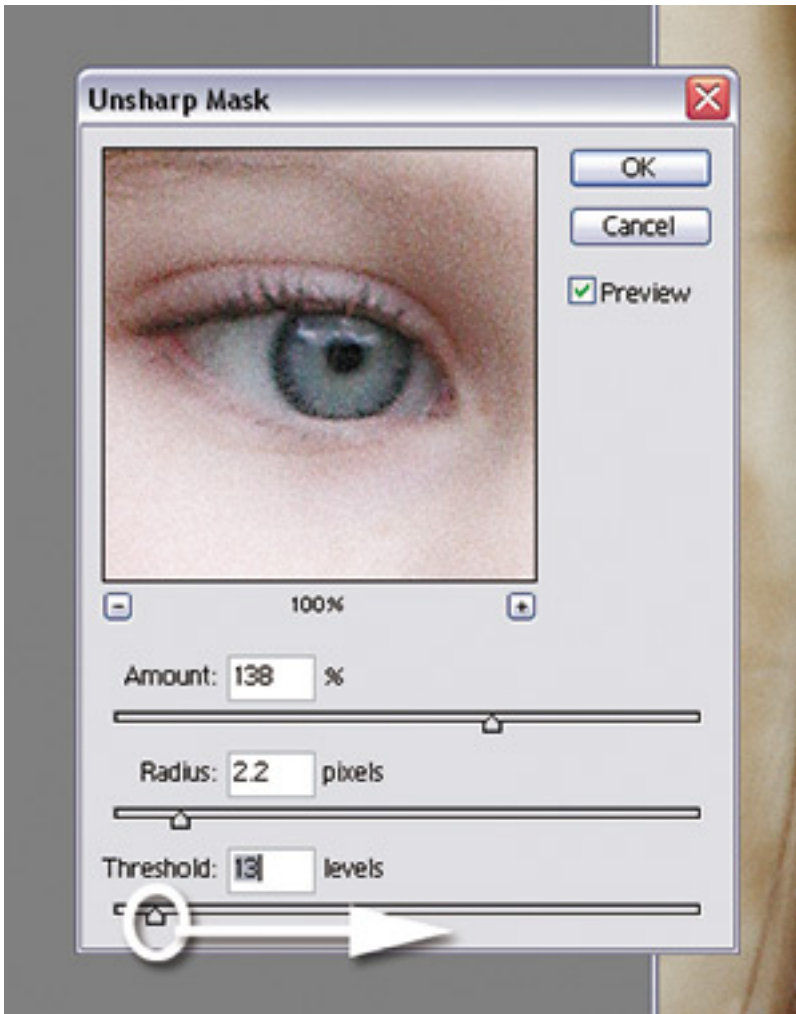
Use these steps to use the Diffuse Glow filter to enhance an image.



00 Make sure that the Effects panel is visible and that the Effects panel is set to the Distort filter and that the Dreamy filter is selected.



00 With the Filter (Diffuse Glow) selected, click the OK button in the Properties palette to apply the glow effect to the image in the canvas.



[Photoshop Unsharp Mask dialog box](#) and the [Unsharp Mask dialog box](#) for the complete instructions on how to use the Unsharp Mask dialog box.