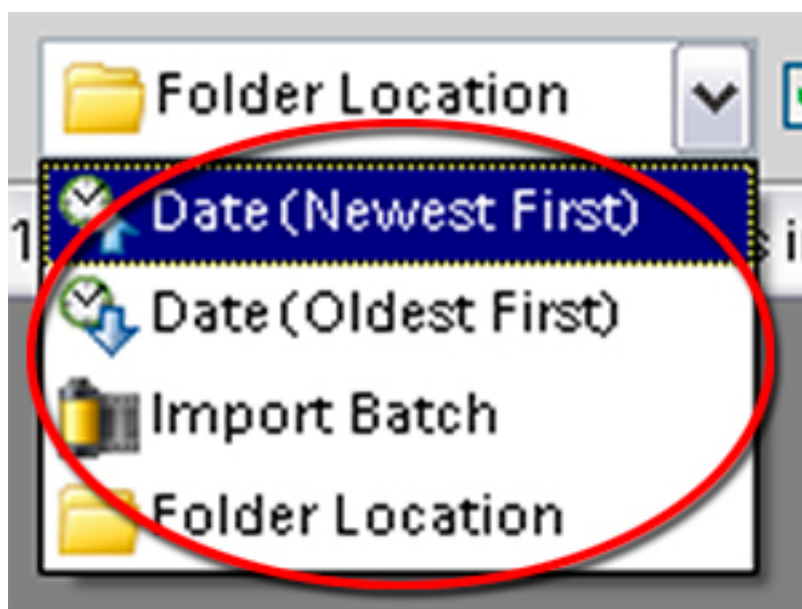
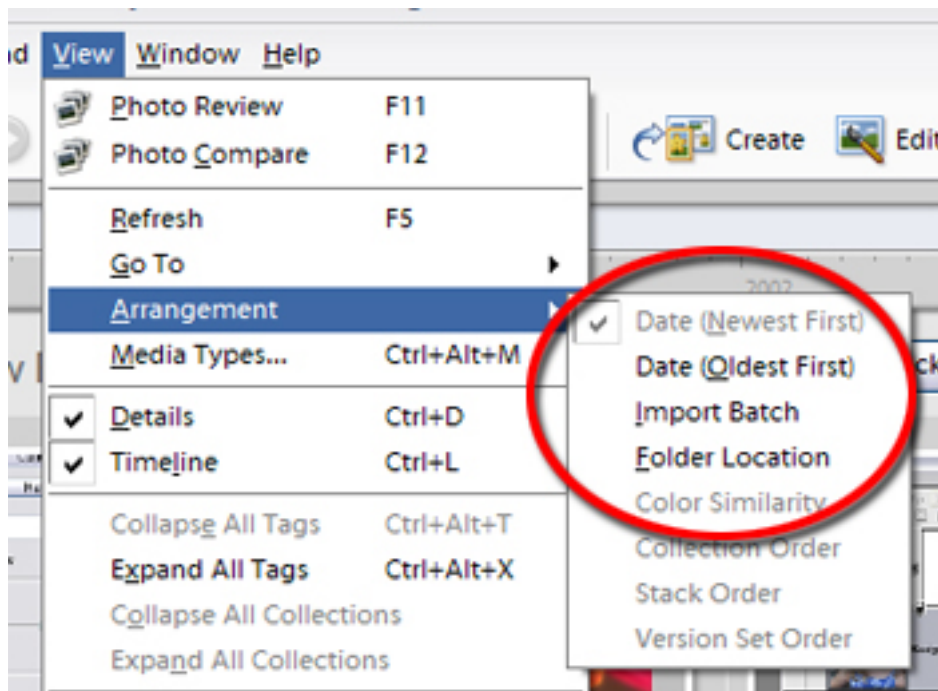


## PSE.NET Tips 'n' Tricks



The Photo Browser provides several ways in which to view the thumbnails of the photos you have imported into Elements. They are:

**Date (Newest First)** – Displays the most recently taken or imported photos first.

**Date (Oldest First)** – Shows the oldest photos first or in chronological order.

**Import Batch** – Displays pictures based on the batches or groups in which they were imported ('Get Photos'). This option also shows where the pictures were imported from.

**Folder Location** – Shows the thumbnails alongside the folders where they are stored. This view option is similar to the File Browser in the Standard Editor work- space.

The arrangement view can also be changed via the drop-down menu at the bottom left of the screen.

This Tip 'n' Trick is presented as part of your subscription package and membership at PhotoshopElements.net. We keep all our previous Tips 'n' Tricks online so that you can always access them. Go to Tips 'n' Tricks > Members Tip 'n' Tricks Archives at [www.photoshopelements.net](http://www.photoshopelements.net) for the complete list.