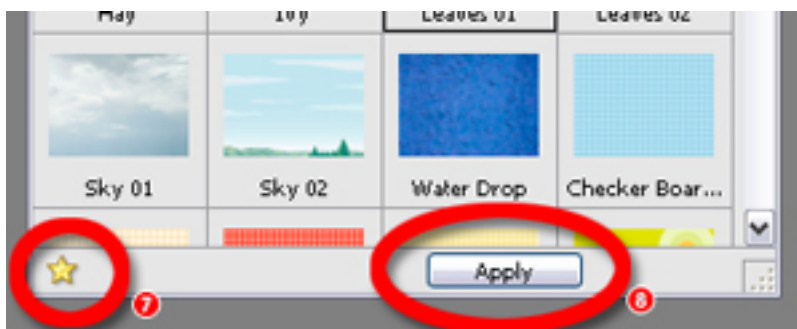
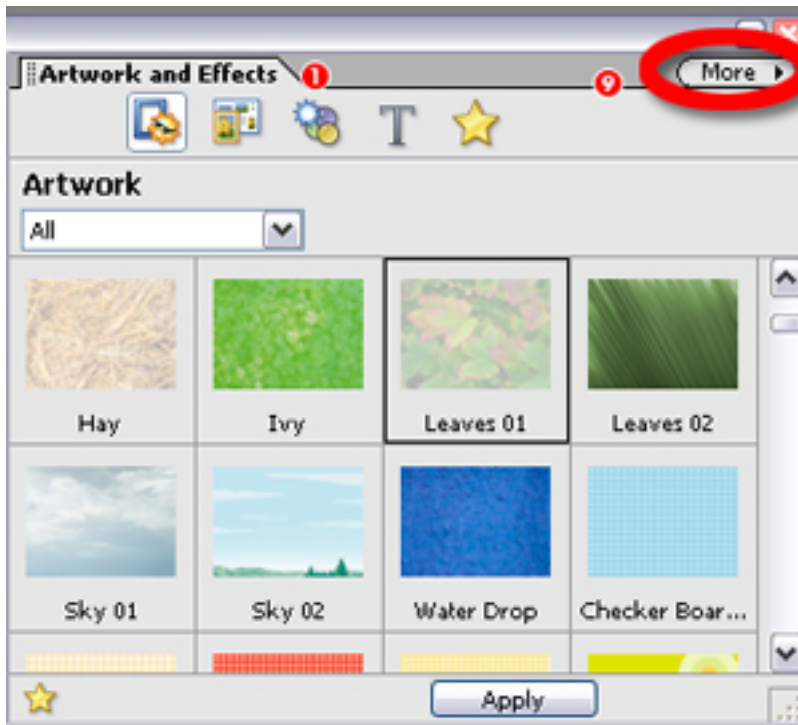


PSE.NET Tips 'n' Tricks



The Artwork and Effects palette (1) replaces the Style and Effects palette of version 4.0 and is

the central place for the storage of a variety of design components that can be used to enhance the look of your photo compositions. The palette contains five separate sections which are accessed via the buttons at the top of the palette frame.

The Artwork (2) section contains backgrounds, frames, graphics and shapes. The Themes (3) area houses prebuilt and fully styled layout designs for a variety of projects including scrapbook pages, CD/DVD jackets and greeting cards. The Special Effects (4) group includes filters, layer styles, and photo effects. The Text section (5) contains a variety of one-click text effects that can be added quickly and easily to type. The Favorite (6) group holds user selected favorites chosen from the other areas.

To add a theme, frame, background or any other entry from the palette select the entry and then click the Add to Favorites button (7). To apply a style, effect or add artwork to a document select the Palette entry and click the Apply button (8). Extra palette options and preferences are available via the More button (9) at the top of the palette. Extra content can be added to the palette simply by dropping new artwork and effects options in the associated folders found in C:\Documents and Settings\All Users\Application Data\Adobe\Photoshop Elements5.0.

This Tip 'n' Trick is presented as part of your subscription package and membership at PhotoshopElements.net. We keep all our previous Tips 'n' Tricks online so that you can always access them. Go to Tips 'n' Tricks > Members Tip 'n' Tricks Archives at www.photoshopelements.net for the complete list.